

Examination results 2011

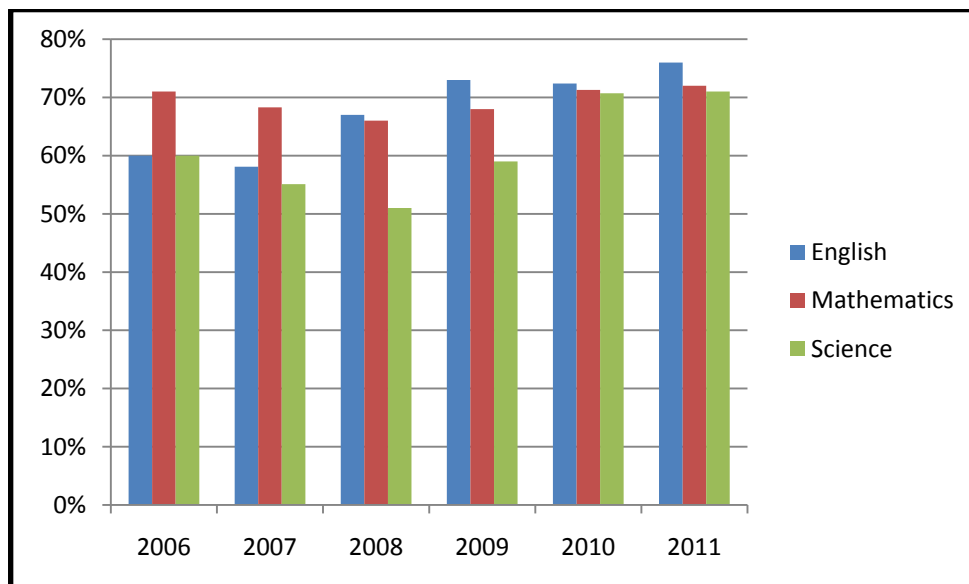
Key Stage 3 Results.

The expected level to be reached by an average ability 14 year old is level 5. Level 6, 7 and 8 represent a higher level of achievement. 2010 results in (brackets).

	% Level 8	% Level 7	% Level 6	% Level 5	% Level 4	% Level 3
English	NA	8% (2)	29%(15)	39% (55)	22% (24)	2% (3)
Mathematics	1% (1)	9% (11)	27% (27)	35% (32)	19% (25)	9% (3)
Science	NA	3% (1)	34% (19)	34% (50)	26% (23)	3% (6)

Historic comparison at level 5+

	2006	2007	2008	2009	2010	2011
English	60%	58.1%	67%	73%	72.4%	76%
Mathematics	71%	68.3%	66%	68%	71.3%	72%
Science	60%	55.1%	51%	59%	70.7%	71%



Key Stage 4 Results

- This was an excellent set of results with 45% of our students achieving 5A*-C passes including English and Mathematics far exceeding the government benchmark of 35% and
- 95% of students passed in 5 subjects and 87% achieved 5 A*-C grades.
- 300 A* or A grades is an excellent achievement.
- 91% of our students achieved 2 GCSEs in Science at A* - C.
- 44 students achieved 4 or more A*/A grades with the highest being 8 A*/A grades.

GCSE

	A*	A	B	C	D	E	F	G	U	%A*-C	%A*-C (2010)	%A*-G
Art & Design	0	0	3	8	5	14	9	6	2	23.4%	17.8%	95.7%
Biology	0	9	6	6	1	0	0	0	0	95.5%	66.7%	100%
Chemistry	1	4	8	8	1	0	0	0	0	95.5%	50%	100%
Citizenship	0	6	17	9	14	6	2	1	3	55.2%	NA	94.8%
Dance	3	4	7	12	9	2	1	0	1	66.7%	86.4%	97.4%
Drama	0	8	15	14	6	3	0	2	1	75.5%	80.0%	98%
D&T: Graphic Products	0	0	3	3	5	4	3	3	0	28.6%	28.1%	100%
D&T: Product Design	1	0	0	1	5	8	8	1	1	8.0%	NA	96.0%
D&T: Resistant Materials	0	0	1	1	2	1	2	1	0	25.0%	50%	100%
D&T: Textiles	0	0	1	0	0	0	0	0	0	100.0%	NA	100%
English	3	14	50	50	41	14	5	1	5	63.9%	71.9%	97.3%
English Literature	5	23	59	43	23	6	5	5	16	70.3%	67%	91.4%
French	0	2	5	18	20	15	30	29	43	15.4%	30.5%	73.5%
History	0	0	1	0	0	0	0	0	0	100%	NA	100.0%
Humanities	0	1	6	4	6	4	2	1	0	45.8%	36.4%	100.0%
Maths	0	13	23	57	41	28	17	4	1	50.5%	45.1%	100.0%
Media Studies	9	17	16	8	4	2	2	0	1	85.2%	76.5%	98.4%
Physics	0	2	9	9	2	0	0	0	0	90.0%	45.8%	100%
RE	3	2	12	14	6	3	2	0	1	72.1%	40.7%	97.7%
Science Single	0	1	0	1	0	0	0	0	0	100.0%	14.8%	100.0%
Spanish	0	0	1	1	2	1	3	0	0	25.0%	40.7%	100.0%
Sports / PE Studies	0	0	2	8	10	3	3	0	0	38.5%	57.9%	100.0%

Btec Diploma and Certificate

	A*	A	B	C	D	E	F	G	U	%A*-C	%A*-C (2010)	%A*-G
Btec An. Care = 4 GCSEs	0	4	16	36	0	0	0	0	1	98.2%	93%	98.2%
Btec Media = 4 GCSEs	12	4	4	8	0	0	0	0	0	100.0%	NA	100.0%
Btec Music = 2 GCSEs	6	2	16	20	0	0	0	0	2	95.7%	NA	95.7%
Btec Music = 4 GCSEs	8	4	4	0	0	0	0	0	0	100.0%	NA	100.0%
Btec PA Acting = 4GCSEs	16	0	4	8	0	0	0	0	0	100.0%	NA	100.0%
Btec PA Dance = 2 GCSEs	4	0	10	14	0	0	0	0	0	100.0%	95.7%	100.0%
Btec PA Dance = 4 GCSEs	28	0	20	4	0	0	0	0	0	100.0%	NA	100.0%
Btec Sport = 4 GCSEs	16	8	12	0	0	0	0	0	0	100.0%	NA	100.0%

OCR Diplomas

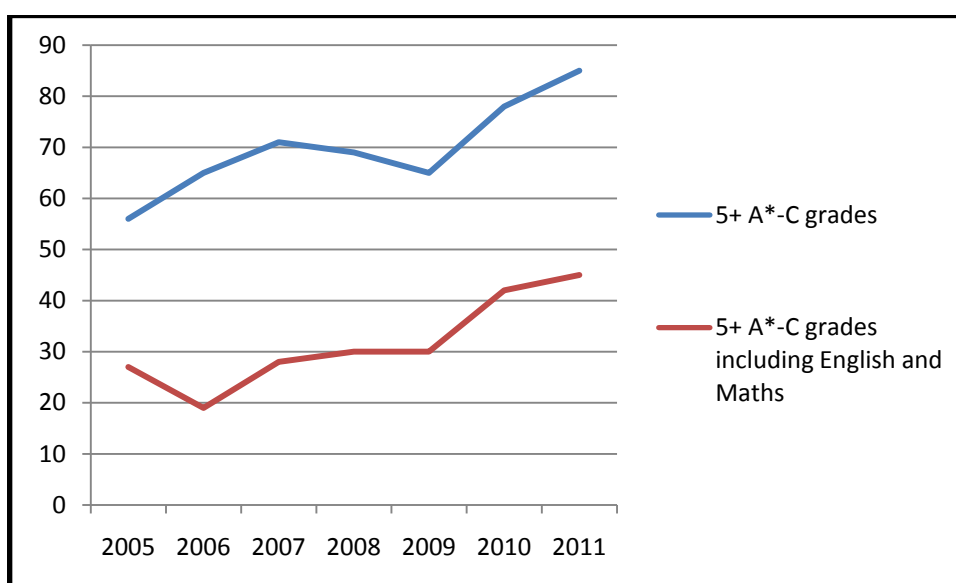
	A*	A	B	C	D	E	F	G	U	%A*-C	%A*-C (2010)	%A*-G
Business	0	0	4	16	0	0	0	0	0	100.0%	45.5%	100.0%
Health and Social Care	0	10	20	16	0	0	0	0	0	100.0%	100.0%	100.0%
Information Technology	0	30	29	154	0	0	0	0	0	100.0%	100.0%	100.0%
Science	0	0	16	284	0	0	0	0	0	100.0%	100.0%	100.0%
Travel and Tourism	0	16	12	0	0	0	0	0	0	100.0%	100.0%	100.0%

Alternative Programmes

Numbers of Passes

	A*	A	B	C	D	E	F	G	U	%A*-C	%A*-C (2010)	%A*-G
Catering	0	0	0	6	0	0	0	0	4	60.0%	NA	60.0%
Construction	0	0	0	4	0	0	0	0	4	50.0%	NA	50.0%
Hair and Beauty	0	0	0	20	0	0	0	0	0	100.0%	NA	100.0%
Motor Vehicle	0	0	0	14	0	0	0	0	10	58.3%	NA	58.3%
Nutrition	0	0	3	0	0	0	0	0	0	100.0%	NA	100.0%

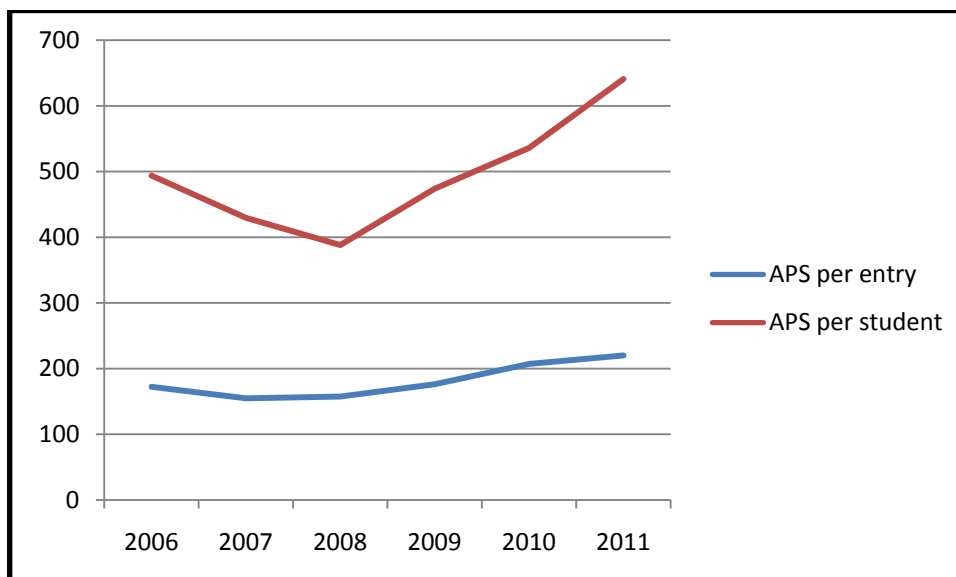
Category	2005	2006	2007	2008	2009	2010	2011
5+ A*-C grades or equivalent	56%	65%	71%	69%	65%	76%	87%
5+A*-C (including English/Maths) or equivalent	27%	19%	28%	30%	30%	42%	45%
A*-C in English				43.6%	42.8%	71%	63.9%
A*-C in mathematics				40.5%	42%	44%	50.5%
5+ A*-G grades or equivalent				95.3%	89%	90%	95%
Any passes (GCSEs or equivalent)				99.6%	100%	97%	97%



Key Stage 5 Results

No of A Level Passes	2008	2009	2010	2011
1+	91%	99%	99%	100%
2+	69%	83%	91%	93%
3+	41%	47%	54%	70%
4+	none	none	3.7%	9%
5+	none	none	none	1%

	2006	2007	2008	2009	2010	2011
APS per entry	172.2	154.7	157.4	176.2	207	220
APS per student	493.7	429.4	388.0	473.8	536	641



100% Year 13 students were entered for one or more A Levels and achieved at least 1 A Level pass. 93% achieved 2 A Level passes. 69% of the 59 achieved 3 A Level passes. 5 students achieved 4 A Levels with 1 student even achieved 5.

Subject	A*	A	B	C	D	E	U	pass	Entry	Pass% 2011	Pass % 2010	Pass% 2009	Pass % 2008
Art	0	0	0	0	0	1	0	1	1	100%	0%	100%	75%
Biology	0	0	0	0	2	1	0	3	3	100%	100%	67%	17%
Business	0	1	3	0	0	0	0	4	4	100%	100%	73%	100%
Chemistry	0	0	0	2	1	0	1	3	4	75%	100%	NA	NA
Communication & Culture	2	2	4	3	0	0	0	11	11	100%	100%	NA	NA
D&T Product Design	0	1	1	2	1	1	0	6	6	100%	100%	50%	100%
Dance	2	1	1	2	0	0	0	6	6	100%	100%	100%	100%
Drama	0	0	3	6	2	0	0	11	11	100%	100%	100%	100%
French	0	0	0	0	0	1	0	1	1	100%	NA	NA	NA
English Literature	3	2	10	6	0	0	0	21	21	100%	100%	100%	100%
Government & Politics	0	1	0	4	0	0	0	5	5	100%	100%	100%	100%
Health & Social Care	0	3	0	1	0	0	0	4	4	100%	100%	100%	100%
I T Applied	0	2	0	4	0	1	0	7	7	100%	33.3%	14%	50%
Mathematics	0	0	0	2	2	0	0	4	4	100%	0%	67%	100%
Media Film and TV Studies	0	2	13	7	4	1	0	27	27	100%	100%	100%	100%
Performing Arts (Dance)	1	9	5	1	1	0	0	17	17	100%	100%	100%	100%
Photography	0	0	1	0	0	0	0	1	1	100%	100%	100%	100%
Physics	0	0	0	1	1	0	0	2	2	100%	NA	NA	33.3%
Religious Studies	2	0	2	1	2	0	0	7	7	100%	NA	100%	100%
Science Applied	0	0	0	0	2	3	0	5	5	100%	NA	100%	100%
Sociology	0	0	0	5	1	0	0	6	6	100%	NA	NA	NA
Sport/PE Studies	0	0	0	1	1	1	0	3	3	100%	67%	100%	100%